



VERMONT MOUNTAIN BIKE ASSOC.

SINCE  1997

2025 ANNUAL MEETING

THANK YOU FOR JOINING!

Photo credit: Mark Clement



## AGENDA

- 6:00 – 6:05 Welcome, Agenda, & Housekeeping
- 6:05 – 6:35 2024 Overview and Highlights
- 6:35 – 6:45 Annual Financial Summary
- 6:45 – 6:50 2024 Grant Programs & Awardees
- 6:50 – 7:35 Completed Chapter Naming & Trail Grants
- 7:35 – 7:40 Board Election Results
- 7:40 – 7:45 Looking Ahead
- 7:45 – 7:50 2025 Ambassadors, Bike Raffle, & Events
- 7:50 – 8:00 Q&A, Wrap-up
- 8:00 Adjourn

### HOUSEKEEPING

- All participants will be muted
- Use the Q&A box to ask any questions, which we'll be monitoring throughout the night and either pausing to answer or addressing them in the final Q&A
- If we don't answer your question(s) tonight, please stay tuned for a summary of the meeting in which we'll seek to address those in the Q&A that weren't covered



## VISION

For mountain biking to be at the center of healthy, economically vibrant, and environmentally sustainable communities throughout Vermont, with well-planned, accessible, and progressive trail systems state-wide.

## MISSION

To ensure the sustainability of mountain biking in Vermont and thoughtfully promote exceptional riding experiences for all through advocacy, education, and community-driven stewardship.



## WHO WE ARE

### ONE CENTRAL OFFICE



Advocacy



Education



Membership



Chapter Support



Insurance



Grants & Fundraising

### 28 LOCAL CHAPTERS



Trail Stewardship



Community Engagement



Programs



Landowner Relationships



Volunteering



Events





## LAND ACKNOWLEDGEMENT

*The lands VMBA Chapters currently help steward, and on which we have the privilege to ride, were the original homeland of Native Tribes until they were forced to cede control through Euro-American governance.*

*We recognize these Tribes, the Land, and its stories, as many organizations and governments have done, and express our gratitude and appreciation to those whose territory and homelands we occupy.*



**~930 miles** of public-access singletrack

**26,000+** volunteer hours

**9,300+** Members

**28** Chapters

**~24 miles** of new trails

**150+ miles** of major upgrades & repairs

2024 IN NUMBERS



## OUR TRAIL MAP: 5-YEAR STRATEGIC PLAN

### MAJOR GOALS – THE TACO



#### TRAILS

- 1 Steward a statewide network of accessible, well-planned, progressive, and sustainable trails

#### ADVOCACY

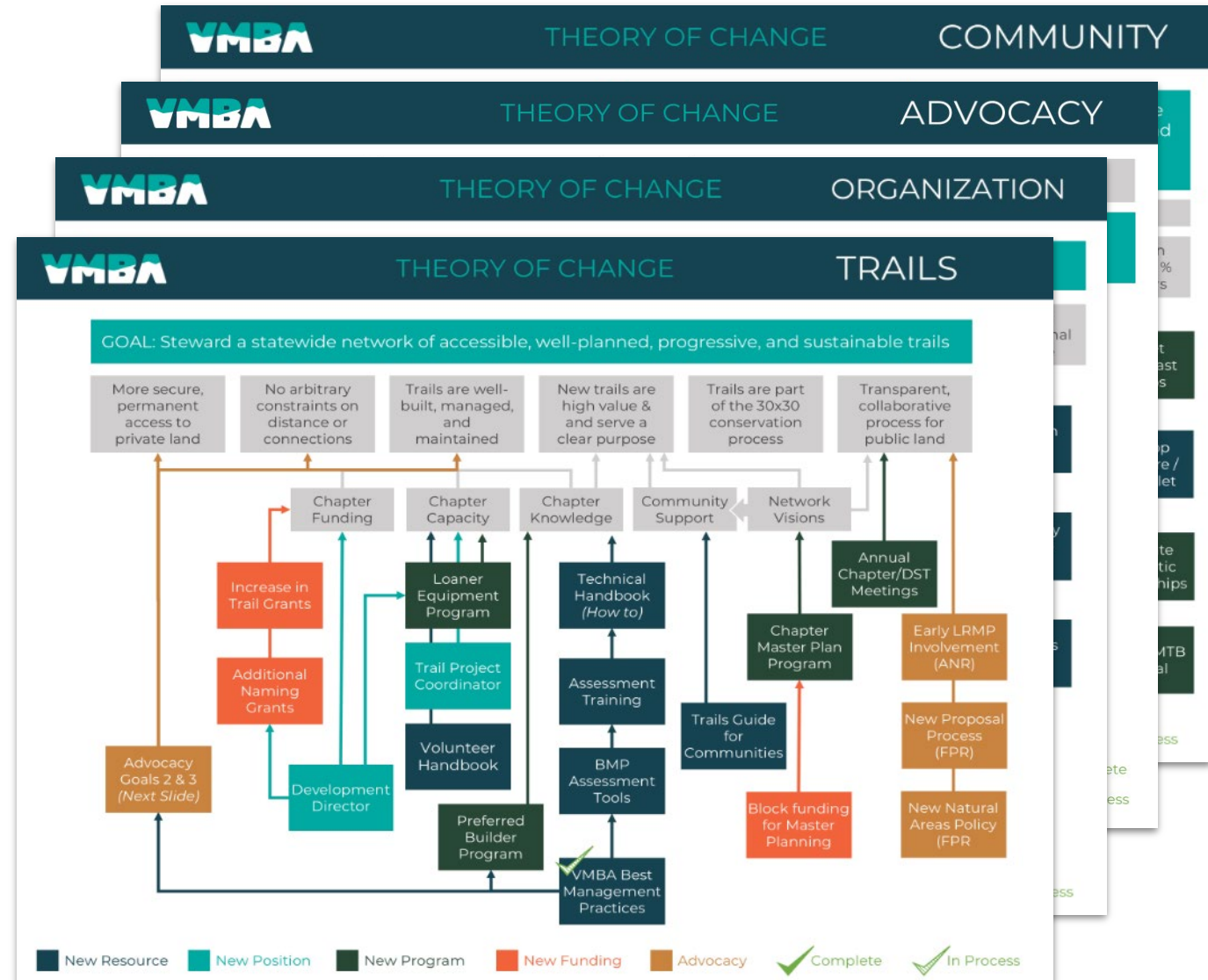
- 2 Move public-access recreational trails out of Act 250 and into an appropriate oversight model
- 3 Acknowledge landowners by incorporating public-access trails into the Current Use program

#### COMMUNITY

- 4 Establish an informed ridership that knows where, when, and how to ride
- 5 Count the majority of those who regularly use our trails as active VMBA members
- 6 Significantly increase youth, non-male, BIPOC, and adaptive representation in MTB ridership

#### ORGANIZATION

- 7 Run a thriving, sustainable organization that attracts and retains talent and develops our Chapters





# PROGRESS TOWARDS OUR MAJOR GOALS

## » TRAILS

- Best Management Practices published
- 24 new miles of sustainable, well-planned, accessible trails
- Upgrades to 150+ miles of trail
- +\$60K in Major Storm Recovery Funds used
- +\$250K in USFS funds to finish Silver Moose

## » ADVOCACY

- VTGC Leadership
- Launch of Vermont Trails System Modernization
- Recreation Access Recognition (H.147 / S.79)
- Outdoor Recreation Day at the Statehouse
- Act 59 / 30x30 - Recreational Trails Integration

## » COMMUNITY

- Adaptive Assessment Program, Grants, & TAH
- Move Forward Together Vermont Launch
- Learn-to-Bike Month Programming
- The Visitors Guide to Mountain Biking in VT
- Elevate Mountain Bike Festival
- Ride With Gratitude

## » ORGANIZATION

- Expanded Chapter Resource Library
- Velomont MOU with Vermont Huts
- Organizational Operational Manual
- Advisory Council Growth
- \$91,555 in total grant funding to Chapters

*Please add any questions to the Q&A!*



## ACCESSIBILITY & ACCESS

### » ADAPTIVE TRAIL ASSESSMENTS

- Performed 8 Adaptive Trail Assessments with Vermont Adaptive and Kelly Brush Foundation
- Awarded \$13K+ to fund trail alterations
- Have over 100 miles of MTB trails in Vermont that are adaptive friendly
- Launched interactive map for adaptive riding
- Presenting our work at ITS next month



### » TRAIL ACCESSIBILITY HUB

- Consortium of six (6) organizations
- Largest ever VOREC Community Grant
- January Trail Accessibility Summit
- Centralized resource for trail managers and users
- Loaner equipment for qualified stewards (aMTB)



## BEST MANAGEMENT PRACTICES

### Rationale

- Chapter guidance
- Builder accountability
- Advocacy tool
- Trail Assessments

### End-Products

- Lit. Review: 40+ Sources
- 22 Categories
- 160 unique BMPS
- Assessment tool
- Contracting Template



TABLE OF CONTENTS	
SECTION	
About VMBA	
Mission, Vision, & Values	
About this document	
Trail Construction BMPs	
Sustainability Principles	
Pre-construction (PC)	
Corridor Clearing (CC)	
Tread Construction (TC)	
Drainage (D)	
Stormwater (SW)	
Water Crossings & Riparian Areas (RA)	
Trail Structures (TS)	
Technical Trail Features and Fall Zones	
Signage Installation (SI)*	
Mechanized Equipment (ME)*	
Invasive Plants (IP)*	
Cultural Resource Protection Measures	
Rare Plant & Animal Species Protection	
Wildlife Protection Measures (W)*	
Trail Maintenance BMPs	
Maintenance Inspections and Plans	
Tread Maintenance (TM)	
Drainage Maintenance and Installation	
Trail Decommissioning (TD)	30
Vegetation Management (VM)	31
Erosion Control (EC)	32
Repair and Replacement of Structures (RRS)	33
Literature Review Summary & Findings	34
Annotated Bibliography	36
Appendix	42
Resource Matrix	
Trail Construction BMP Checklist	
Trail Maintenance BMP Checklist	
Contract Template for Trail Projects	

\* Denotes BMPs that apply to both Trail Construction and Maintenance

Photo: Three Peaks Media



### TRAIL CONSTRUCTION BMPs

The following 124 Best Management Practices (BMPs) are designed to be utilized on any new trail construction project, including trail reroutes of any length. Check for any applicable permits and approvals before beginning any portion of a trail construction project, as well as standing permits that have been approved and their stipulations.

#### Trail Construction BMP Sections:

- Sustainability Principles (SP)
- Pre-Construction (PC)
- Corridor Clearing (CC)
- Tread Construction (TC)
- Drainage (D)
- Stormwater (SW)
- Water Crossings / Riparian Areas (RA)
- Trail Structures (TS)
- Technical Trail Features and Fall Zones
- Signage Installation (SI)\*
- Mechanized Equipment (ME)\*
- Invasive Plants (IP)\*
- Cultural Resource Protection
- Rare Plant and Animal Species Protection
- Wildlife Protection Measures

For more information please refer to the Literature Review, Best Management Practices, Planning, and Design, which contains additional information on trail projects, background on the project, and supporting resources.

- The References and Resources lists supporting information on various Best Management Practices
- BMP Trail Construction Checklist for your trail projects.

\* Denotes BMPs that apply to both Trail Construction and Maintenance

### TRAIL CONSTRUCTION BEST MANAGEMENT PRACTICES

TS

#### TRAIL STRUCTURES (TS)

Practices for constructing durable, safe, and low-impact structures, including but not limited to bridges, boardwalks, retaining walls, rock armoring, and technical features

- TS.1 All rocks and wood placed in the trail tread should be stable
- TS.2 When constructing rock features to retain material, adjacent rock contact points should be at the top of placed rocks to effectively retain material
- TS.3 All rocks should be sourced out of direct sight of the trail corridor, and their transport should avoid damaging vegetation as much as possible
- TS.4 Avoid sourcing native materials from sensitive areas
- TS.5 Utilize only rot and corrosion-resistant materials
- TS.6 Peel any logs used for structures
- TS.7 Space decking approximately 1" apart, affixed with corrosion-resistant hardware, and overhung on stringers by no more than 3"
- TS.8 Minimize cutting of wood on site and collect and dispose of any sawdust, cuttings and wood waste off-site
- TS.9 Remove all treated wood no longer in use and dispose of off-site
- TS.10 Structures in contact with water should be constructed of inert materials (i.e. sills or pilings)

#### References and Resources:

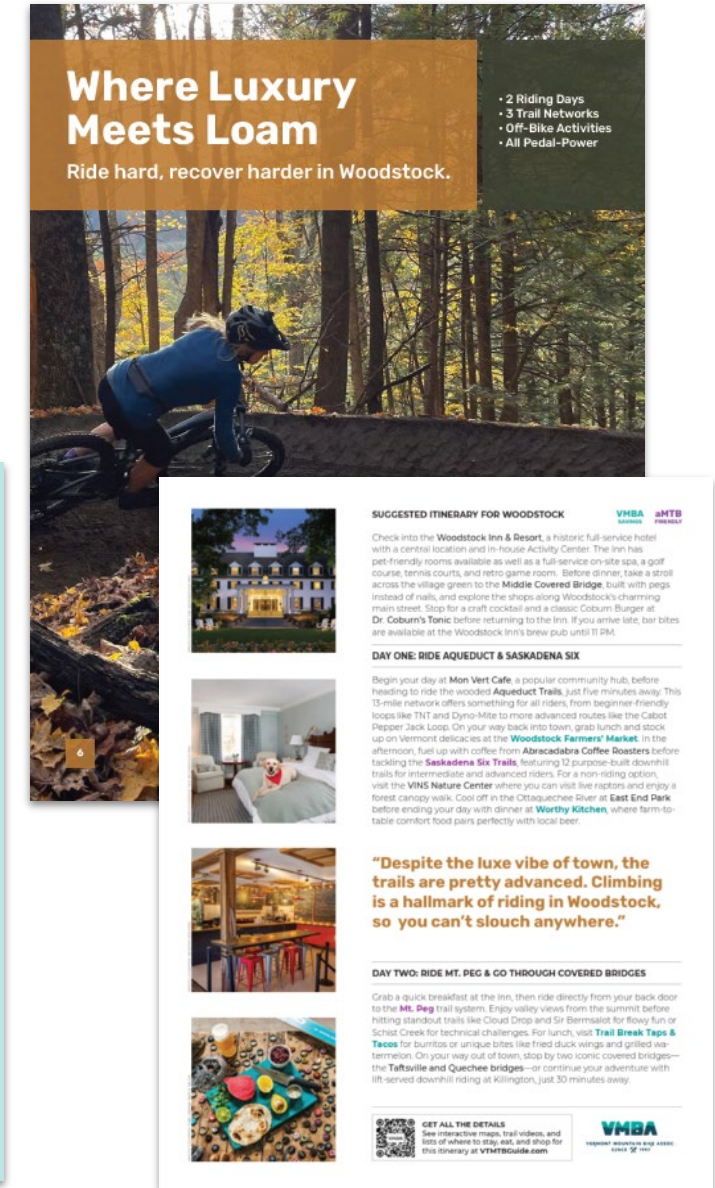
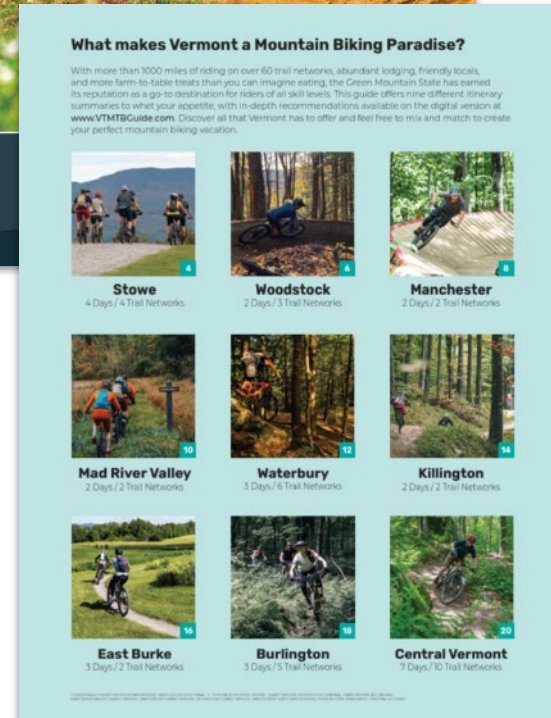
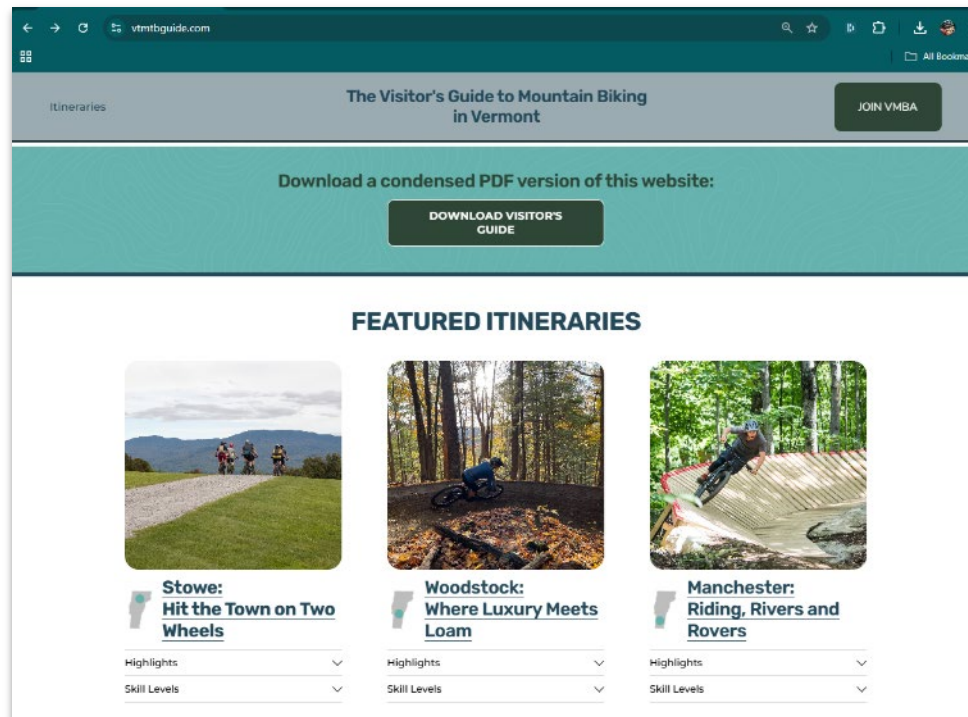
- Parks Canada National Best Management Practices for Trail Maintenance and Modification
- Trail solutions: IMBA's guide to building sweet singletrack
- Guidelines and Best Practices for the Design, Construction and Maintenance of Sustainable Trails for All Ontarians
- Trail Planning Design and Development Guidelines (Minnesota)



## VISITORS GUIDE

### Features

- Funded through EDA T-TERM grant
- Content, Press Engagement, Influencers
- Focus visitation where appropriate
- Capture more visitors as Members





## VELOMONT

### >> Velomont Vision Plan

- Comprehensive planning document that engaged all project stakeholders and communities

### >>Heart of the Greens Loop

- First multi day segment of Velomont Trail
- Connected the communities of Pittsfield and Rochester



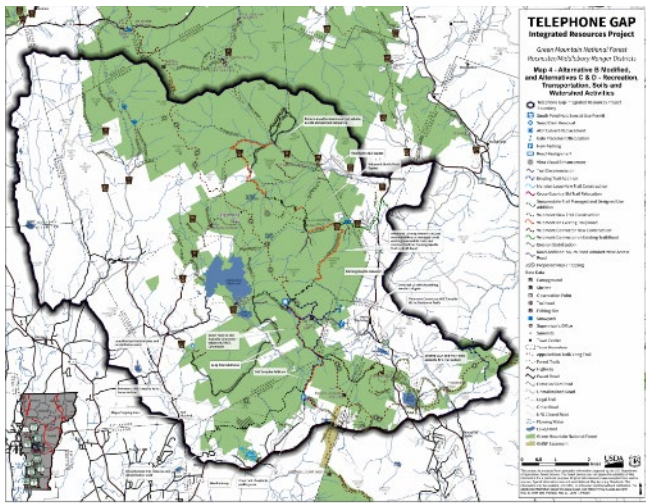
Angus and Walter Installing Signage on HOTG



## VELOMONT UPCOMING



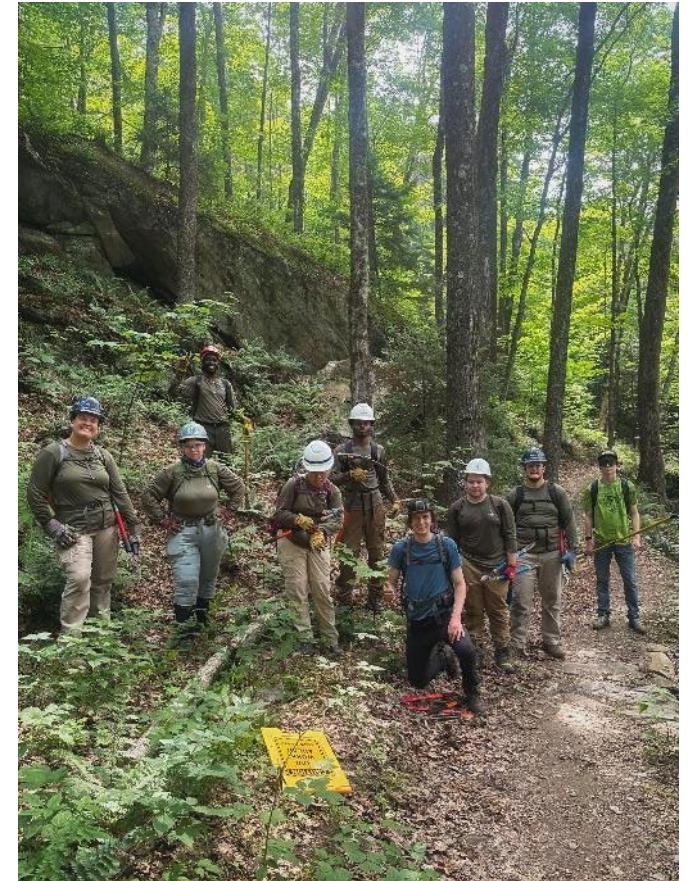
- Federal Land Trail Development
  - Manchester NEPA
    - MA Border to Dorset VT (100 Miles)
  - Telephone Gap Integrated Resources Plan
    - Pittsfield to Mendon (30 Miles)
- Planning for Phase II Areas
  - Landowner outreach
  - State Lands Planning



Telephone Gap Project Map



Manchester NEPA Project Map



Merrick and CorpsTHAT on Swan Dive





## 2025 CHAPTER SURVEY HIGHLIGHTS

**24 miles** of new trails built, **150+ miles** of maintenance, upgrades, repairs, **~928 total miles** under stewardship

**19 major projects**, including new trails and infrastructure

Applications to **28** unique grant programs; awards from **20**

**26,000+** reported volunteer hours:  $\frac{2}{3}$  field work and  $\frac{1}{3}$  admin

Common **challenges**: membership, capacity, and volunteer burnout

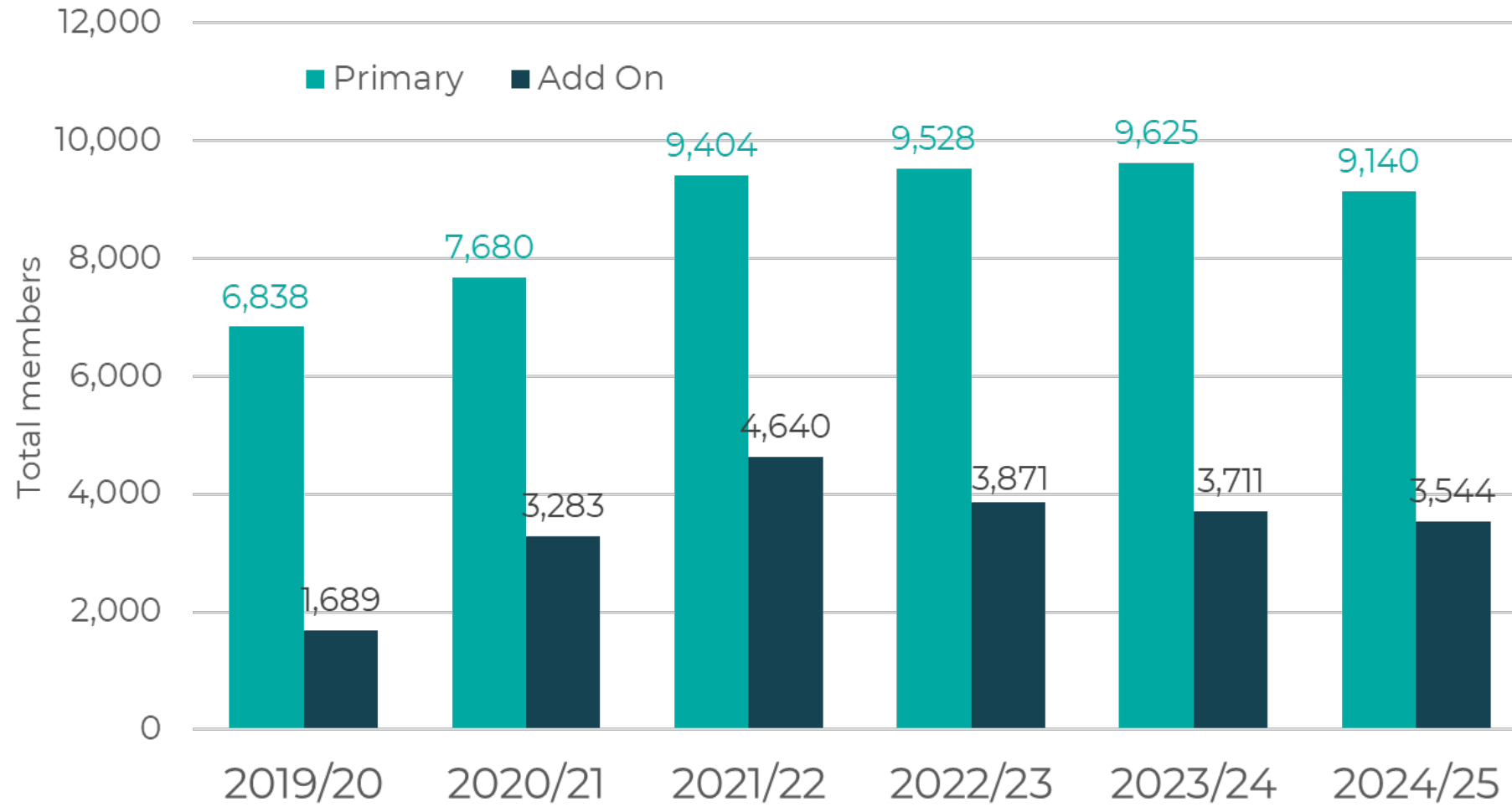
A mix of **support needed** including Act 250, membership campaigns, inter-Chapter communications, volunteer management, and fundraising

**34** networks now open to eMTBs, **21** networks managed for winter fatbiking

**9** Chapters currently running youth programs, another 10 interested in doing so



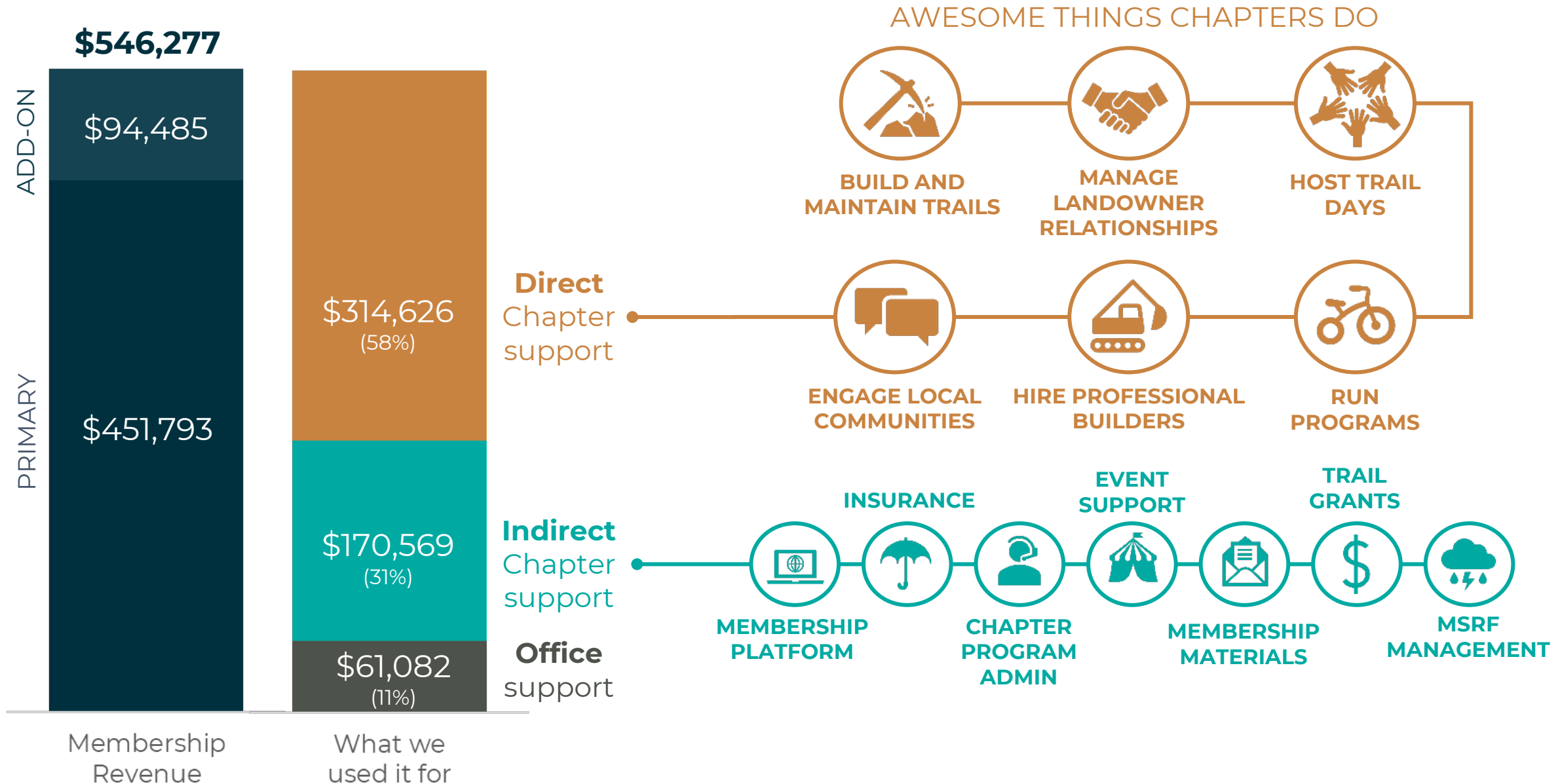
## MEMBERSHIP OVER TIME



- **78%** of 2022/23 Members renewed for 2023/24
- Individual and U25 memberships flat; Family down **~8%**
- Canadian membership grew by **50%** (though remains small at 348 in total)
- Only **13%** of Memberships have one or more Add-ons



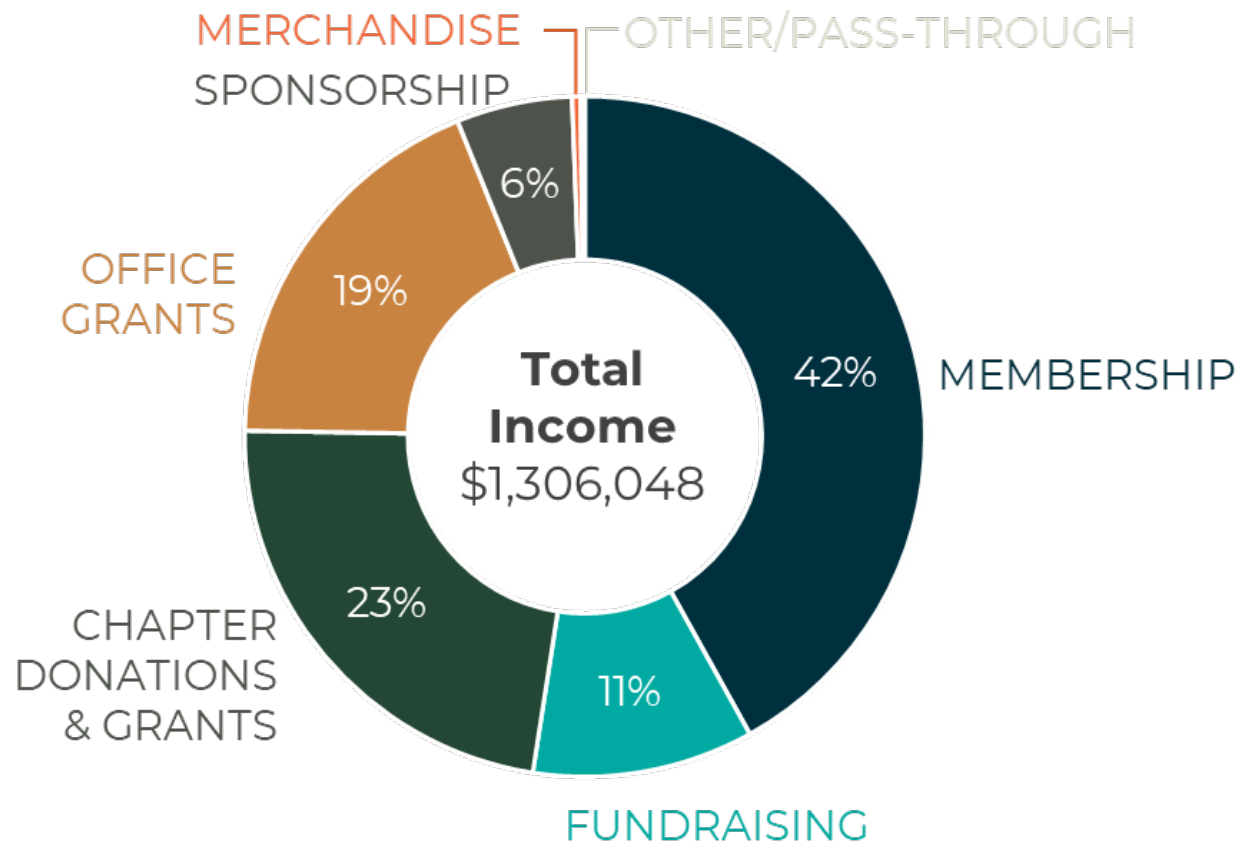
## HOW MEMBERSHIP DOLLARS WERE SPENT IN 2024



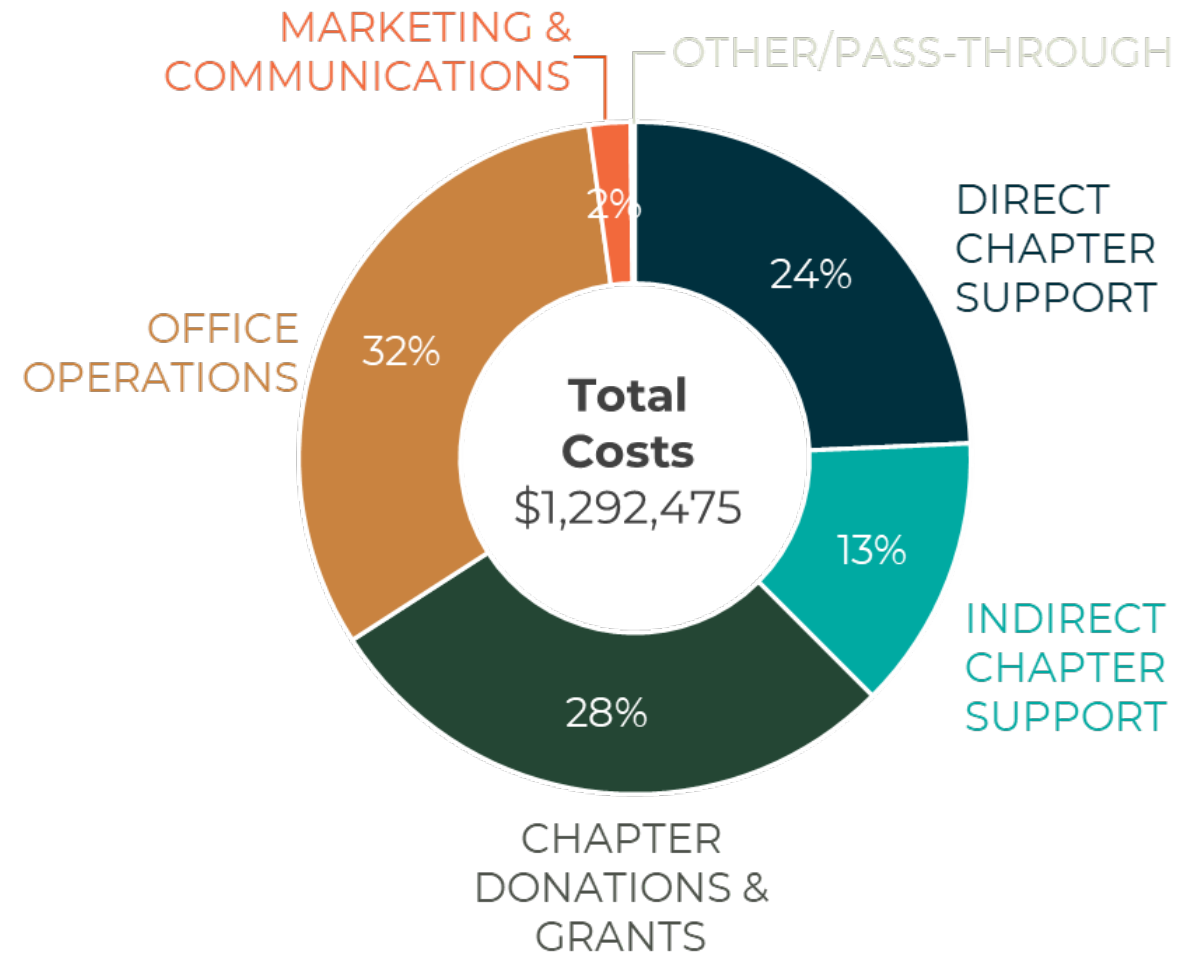


## OVERALL FINANCIALS

### REVENUE



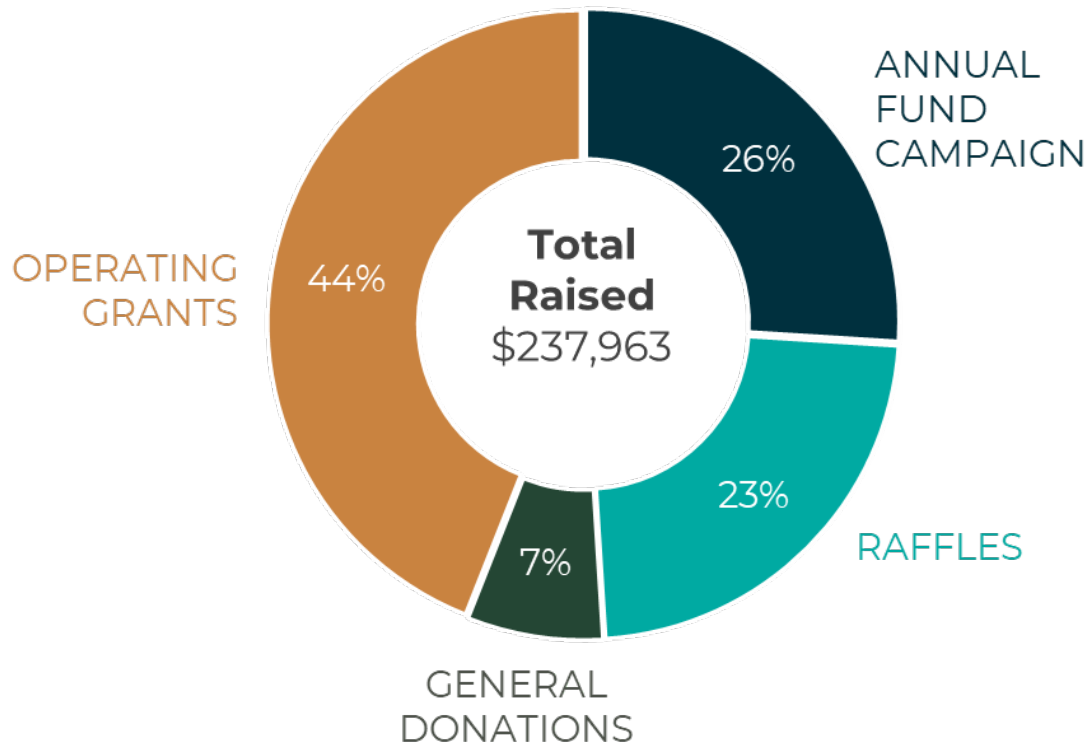
### COSTS





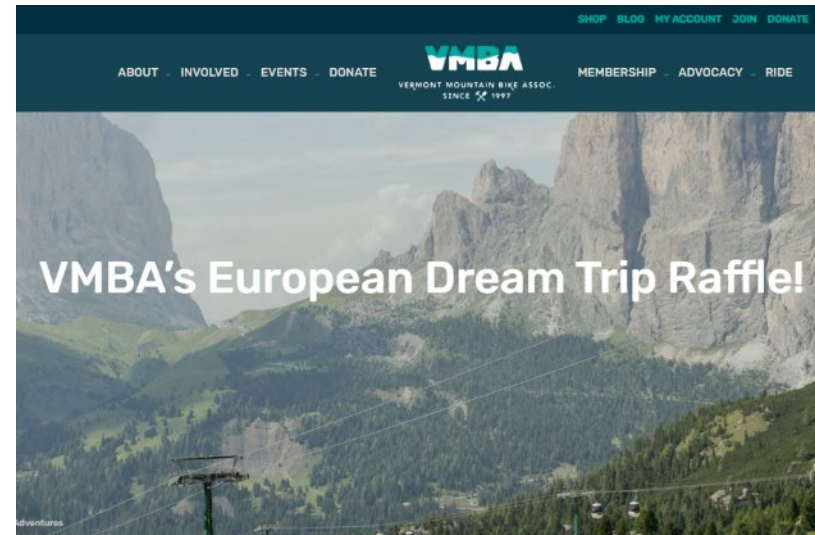
## FUNDRAISING

Grants, charitable giving, and raffles provide critical support for our central office and allow us to keep nearly 90% of membership dollars flowing to Chapters.



This past year, we raised **nearly \$240,000** thanks to the generosity of our Supporters.

THANK YOU!





## 2025 NAMING GRANTS

This year, we worked with six trails-loving companies to award \$23,500 in grants targeted to their philanthropic interests.

Press Forward » **Ridgeline** (\$6,000)  
*Rochester Hollow Blue Progression Trail*

SRAM » **RMT** (\$5,000)  
*New Driving Range Climbing Connector*

Velocio » **UVMBA** (\$5,000)  
*Equipment & Tools to Finish White Wolf*

VBV Vacations » **FOTW** (\$2,500)  
*New Accessible Summit Loop at Saxon*

Motorex » **SoVTA** (\$2,500)  
*Stratton Rec Area Adaptive Upgrades*

MTBVT » **WAMBA** (\$2,500)  
*Winter Grooming Operations Support*

Photo credit: Jeb Wallace-Brodeur



Is your outdoor-minded company interested in participating? **Contact** [joe@vmba.org](mailto:joe@vmba.org)

**Learn more** at [vmba.org/2025-naming-grants-announced/](https://vmba.org/2025-naming-grants-announced/)



## 2024 TRAIL GRANTS

- \*WAMBA » \$7,000  
Major Rehab of Legacy Trails at Mt Peg
- \*RMT » \$7,000  
Completion of Driving Range Phase 1
- STP » \$7,000  
Sterling Forest Climate Resiliency
- \*JAMBA » \$7,000  
Jamaica Village School Skills Trail
- Ridgeline » \$7,000  
Rochester Hollow Blue Progression Trail
- FOTW » \$7,000  
New Accessible Summit Loop at Saxon
- \*LAST » \$5,250  
Lollipop Extension to Back 40 Trails
- \*MAMBA » \$3,500  
Montpelier Parks Connector Trail Design
- \*ACBC » \$1,800  
Organizational Strategic Planning

*\*Completed - included in Chapter presentations*



Photo credit: L&D Trailworks



## 2024 KBF ADAPTIVE UPGRADE GRANTS

**VELOMONT** » \$4,000

*Perspiration to Viewpoint aMTB  
improvements*

**SoVTA** » \$4,000

*Crosstown Trail Tread  
Improvements*

**FOTW** » \$3,075

*Additional Updates to Sunny  
Hollow, Mud Pond, & Saxon Hill*

**BRMBC** » \$2,200

*Meagan's Back 40 Extension  
(combined with Trail Grant)*





## 2024 MSRF GRANTS

**FOTW** » \$8,000

Emergency Repairs and Cleanup  
to Reopen Multiple Networks

**Millstone** » \$2,500

Repair of Multiple Washouts in  
the Barre Town Forest

**BRMBC** » \$2,000

Removal, Cleanup of Blowdowns  
& Root Balls in Multiple Networks

**MRR** » \$1,230

Bridge Replacement on Suki's  
Alley at Blueberry Lake





## NAMING GRANTS & TRAIL GRANTS COMPLETED IN 2024



- Multi-use trail in Bombardier Park



- Driving Range Directional DH Trail
- Driving Range Parking Lot ('23)
- Completion of Driving Range Phase 1



- New DH Flow Trail at Landmark



- Catamount Trail Upgrades
- Catamount Trail Upgrades



- Little River Updates & Restoration



- Schist Creek Enduro Upgrades
- Mt. Peg Rehabilitation



- Montpelier Parks Connector Design



- Organizational Strategic Planning



- Kiosk and Wayfinding Signs
- Mt. Anthony Improvements



- Accessible Multi-Use Path



- Completion of Hard Corps Trail
- School Skills Trail

**LAST**

- Back 40 'Lollipop' Extension



- New Network Signage



- Mapping, Signage, and Kiosk



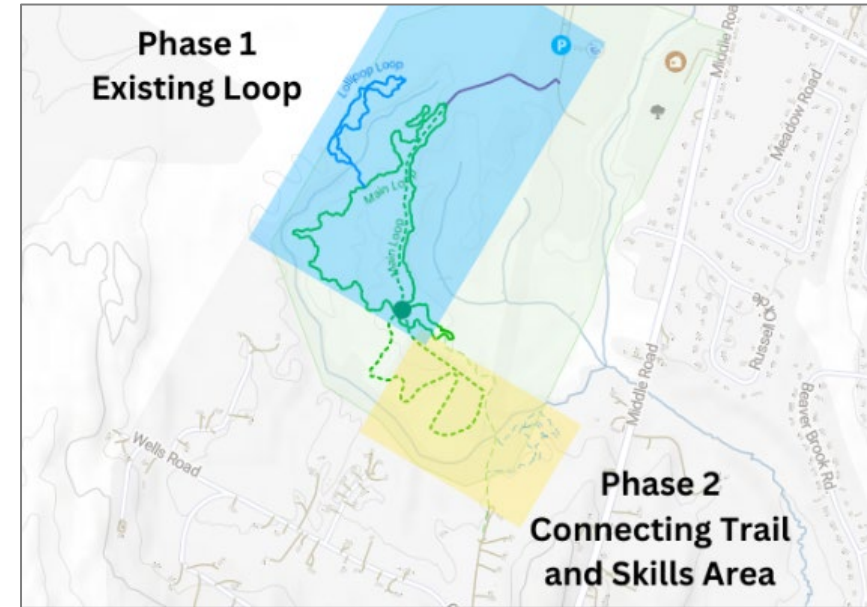
- Stratton Town Forest Access Trail ('23)
- Crosstown Water Mgmt. Upgrades



## FOTW – Bombardier Park Milton



- 2 mile MTB loop added in 2022-2023 to Bombardier Park Milton, VT through volunteers and FOTW with park staff
- Phase 2 added a connector trail to an additional entrance and flow line restoration for a total of .75 miles
- 180 trail crew hours, 170 volunteer hours
- Grand Opening celebration planned for August 2025  
(trails are open and ready to use as finishing touches are made)





## Richmond Mountain Trails - 2023 Trail Grant



Richmond Mountain Trails received a VMBA trail grant towards a parking area at a new trail network, The Driving Range. The lot has space for 53 cars and has dedicated spaces for those with disabilities.

This parking area was built with funding support from other recreation organizations, Catamount Trail, Vermont Huts, WATA, FOTW, CRAG, Bolton Valley and VMBA.

Building the parking lot was vital to the creation and success of the network. Having this infrastructure maintains a positive relationship with the town and neighbors and ensures the network is accessible from the start.





## Richmond Mountain Trails - 2023 Naming Grant

**Royal**Group  
*Since 1935*



Richmond Mountain Trails received a naming grant from The Royal Group to fund the completion of a downhill trail, 'Double Bogey,' at The Driving Range.

This grant closed our funding gap and allowed the construction of this professionally built downhill, a vital addition to the network.

Double Bogey was built by Lepesqueur and Daughters, LLC and has become a favorite trail in the network with spicy boulder rollers and impressive rock work.





## Richmond Mountain Trails - 2024 Trail Grant



Funding was used to complete the professional trail build of bermy, fun 'Heavy Duty,' which had been started by volunteers. This trail was constructed by Lepesqueur and Daughters trail builders.

This funding was very important as this trail completed the planned vision of the network. Heavy Duty provided an intermediate option for descent, which is vital in a network designed to be fully accessible and a place for progression.



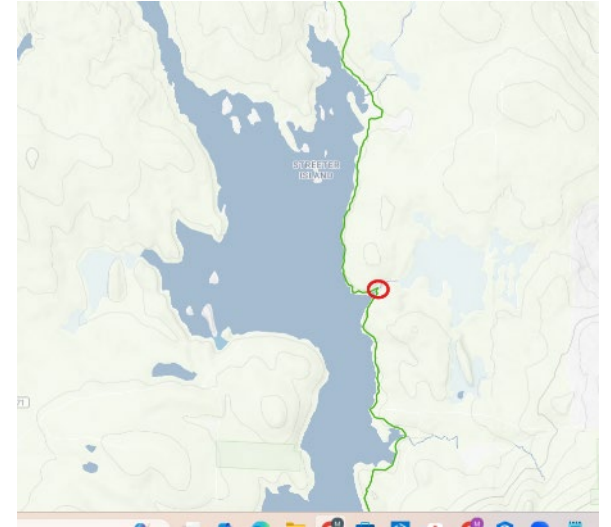
*The Driving Range was built with significant community support. Volunteers logged over 4000 hours and we fundraised \$270,000 for the project. We are grateful to VMBA for the contributions to this project.*



## Velomont Trail– Upgrades to Catamount Trail along the Somerset Reservoir



- Improvements to Section 4 of the Catamount Trail along the Somerset Reservoir, trail section will help connect Stratton Town Forest and the Grout Pond Area.
- Work along the trail included the installation of a new 32' bridge,, select trail reroutes, and a large amount of rock armoring to improve and harden trail tread. Work completed by Hermit Woods, and the Trail Fixing Collective.
- Volunteers helped stage lumber via pontoon boat and canoe!



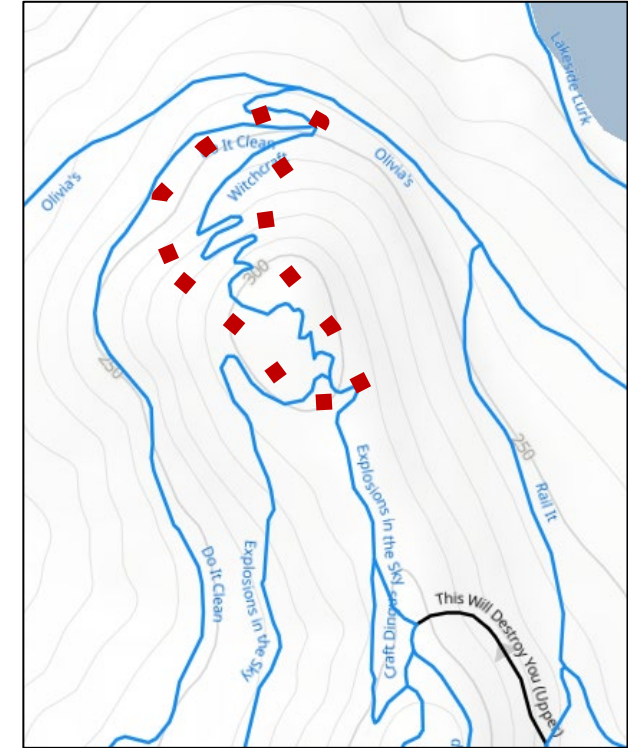


## UVMBA – MTBVT



**\$2,500 from MTBVT** for the construction of an intermediate downhill only flow trail in Landmark (aka Boston Lot)

- Total cost of \$14,000
- 180+ volunteer hours
- Prove to everyone that our networks is not just a pile of rocks and roots (just 99% that)





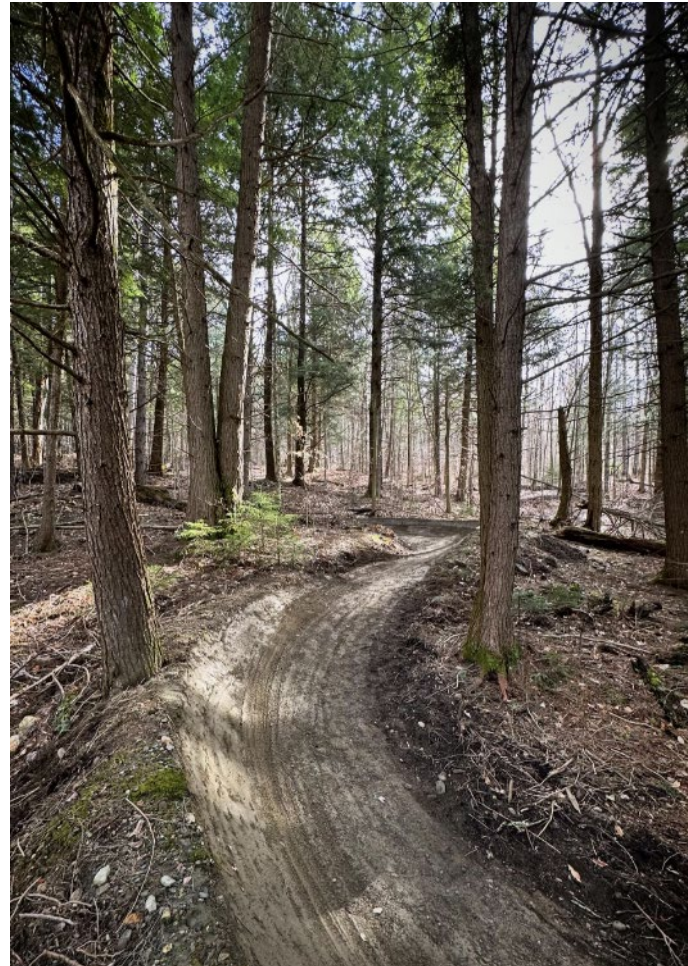
## WATA: Little River Refresh - Darn Tough Naming Grant



\$18,500 was spent with LD Trailworks to refresh Hill Farmer and Highbridge Trails top to bottom

- a. Mix of machine & hand work
- b. Rehabilitate shapes (berms, rollers, doubles)
- c. Improve drainage and sustainability

**LRSP trails only closed one day in 2024 as a result.**





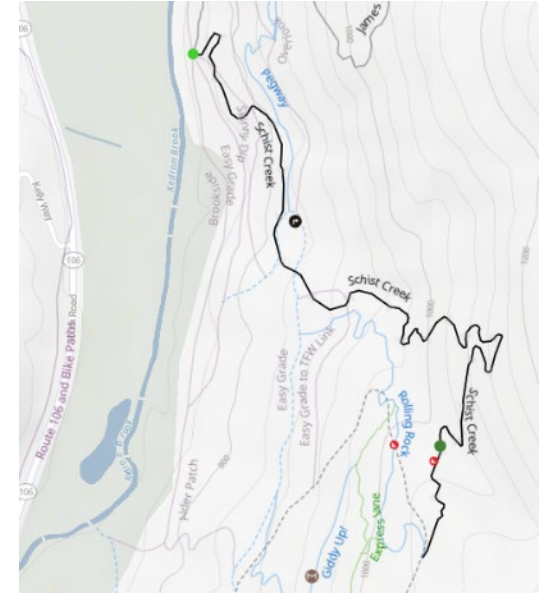
# WAMBA – Velocio Naming Grant, Schist Creek Rehab



- Our most technical enduro trail on Mt. Peg, Schist Creek was suffering from erosion and drainage issues following two years of racing during the Eastern States Cup.

**Thanks to a generous grant from Velocio**, our Trail Crew:

- Corrected all areas of erosion
- Created two new technical features
- Built two catch berms beneath rock drops
- Revamped the transition from climb to descent, creating 50' of additional descent.
- Widened three switchbacks on the climb.





## WAMBA – Mt. Peg, North End Rehabilitation



- Our signature project in 2025, we rehabbed nearly 2 miles of trail, creating a loop that extends accessibility and Blue/Green riding beyond the Village Trail.
- This project also allowed us to open Mt. Peg for groomed, winter riding. Adaptive Assessment to be completed this Spring.
- We had more than 1,100 users on these trails in Jan/Feb!

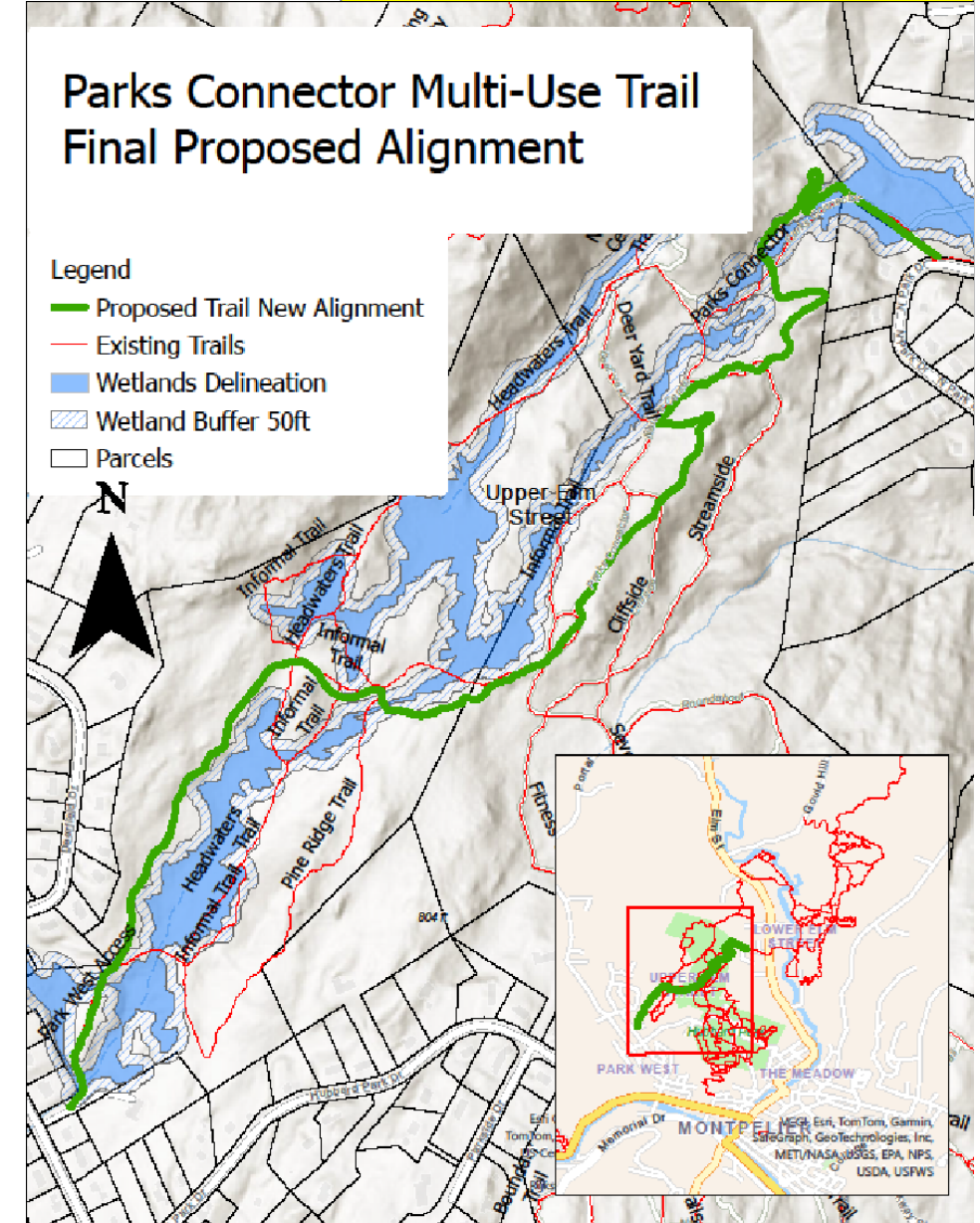




# MAMBA – Hubbard Park Multi Use Trail



- Provides Cross-Town Connectivity between key Montpelier Park systems
- Design Completed Fall of 2024
- Trail will be 6,300' long / 6-8' wide / 0-10% grade
- Accessible for all ages and abilities.
- The trail will have wide turns (20' radius min.) for use with adaptive mtb and nordic grooming equipment.
- MAMBA/Montpelier Parks has completed the first major construction milestone---the completion of a 67' bridge at the Southern end of the trail





## ACBC – Organizational Strategic Planning



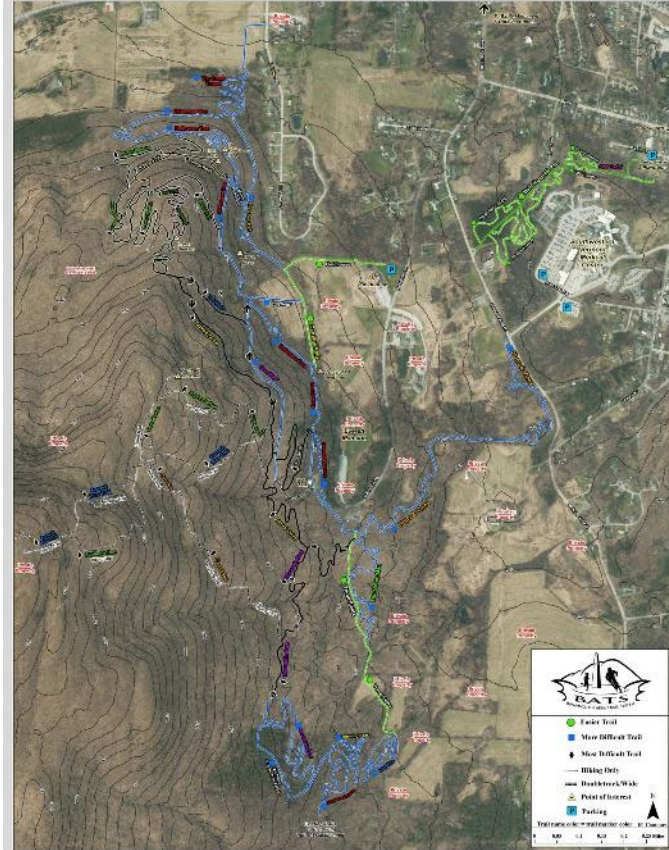
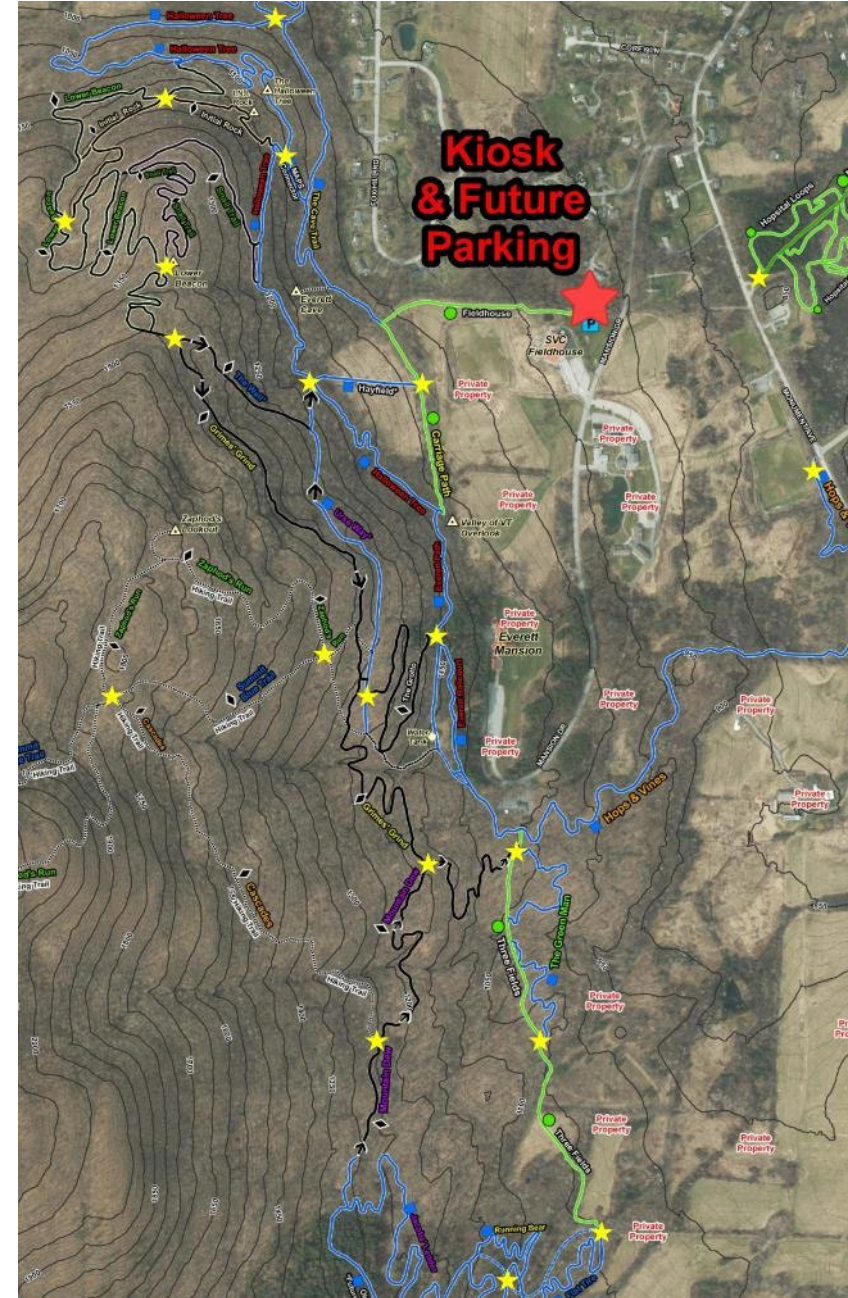
- Timeline: January - March 2024
- Session 1 : Established core values, Imagined ACBC in 2029, took stock of current achievements and challenges, and connected the past to the future. Planned intentional partner outreach.
- Session 2: Reviewed outreach efforts and prioritized ideas from the "Envision the Future"activity
- Session 3: Refined mission and vision, Created specific goals, objectives, and action steps.
- Session 4: Finalized goals, objectives, and action steps. Produced the working strategic plan.

<b>Vision &amp; Mission</b>	1. Formalize and refine ACBC's (values), mission and vision statements.
<b>Roles &amp; Responsibilities</b>	2. Define and assign clear roles and responsibilities for ACBC Board Members, staff, and members.
<b>Member Engagement &amp; Growth</b>	3. Establish consistent communication to ACBC membership and the broader community. 4. Engage the next generation of riders through education and outreach
<b>Trail Stewardship &amp; Development</b>	5. Maintain existing trails to ensure accessibility and sustainability. 6. Improve trail navigation; name and sign existing trails; establish and map fun routes 7. Initiate future trail development in Addison County – Specific areas and action items to be determined.



## Kiosk and Wayfinding Signs ('23 TC)

- Kiosk at new parking area
- 20 wayfinding signs throughout network



**WELCOME TO THE BENNINGTON AREA TRAIL SYSTEM**

The trails managed by BATS are a free multi-use resource intended to promote community health, support the local economy, and encourage people to actively engage in outdoor recreational activities. To learn more, download a map, become a member, volunteer, and to check trail conditions:

[www.BATSVt.org](http://www.BATSVt.org)  
or [Facebook.com/BATSVt](https://facebook.com/BATSVt)

**Allowed Uses:** Walking and Hiking, Running, Mountain Biking, Cross-Country Skiing, Snowshoeing, Birdwatching and other Nature Study.

**Note to Dog Owners:** Dogs are welcome, but must be under control (leash or voice command) at all times. You will encounter other trail users so make sure your canine companion is well socialized prior to using these trails. And pick up after your dog.

**Prohibited:** Littering, ATVs and Motorized Vehicles, Camping, Fires, Tree Cutting, Illegal Drug Use, Harassment.

**Trail Etiquette**

Respect other users, and expect to encounter a variety of other user types on the trails. Show proper respect and appreciation for the land and to the property owners who allow use of their land; if we lose their support we can lose access to the trails.

Ride and recreate on **REGULATED AND OPEN** trails only. Know before you go and Check for Trail Conditions, Closures, and Updates at: [BATSVt.org](http://BATSVt.org) or [Facebook.com/BATSVt](https://facebook.com/BATSVt).

Avoid trails when wet to reduce ruts and ordering of trails (it is hard to fix them after they have been damaged). Trail use is discouraged after a significant rain event. Wait until they are dry.

Stay on trails - don't make them wider. If there is a puddle go through it.

Skidding damages trails - ride, don't slide!

Absolutely no shortcutting, it causes erosion & damages habitat.

Pass others with care - slow down, announce passing, pass on the left.

Ride and recreate within your ability. Control your speed, always making sure you can react in time to avoid another trail user or obstacle.

Take pride in our trails and recreate responsibly to help keep trails open!

BATS trails are made possible thanks to our community partners and private landowners

Southwestern Vermont  
MAPS  
Vermont Mountain Bike Assoc.  
Vermont Land Trust  
Greenleaf Land

Funding for this kiosk was provided through a grant from the Vermont Mountain Bike Association and a generous donation from MSK Engineers.

**MSK ENGINEERS**

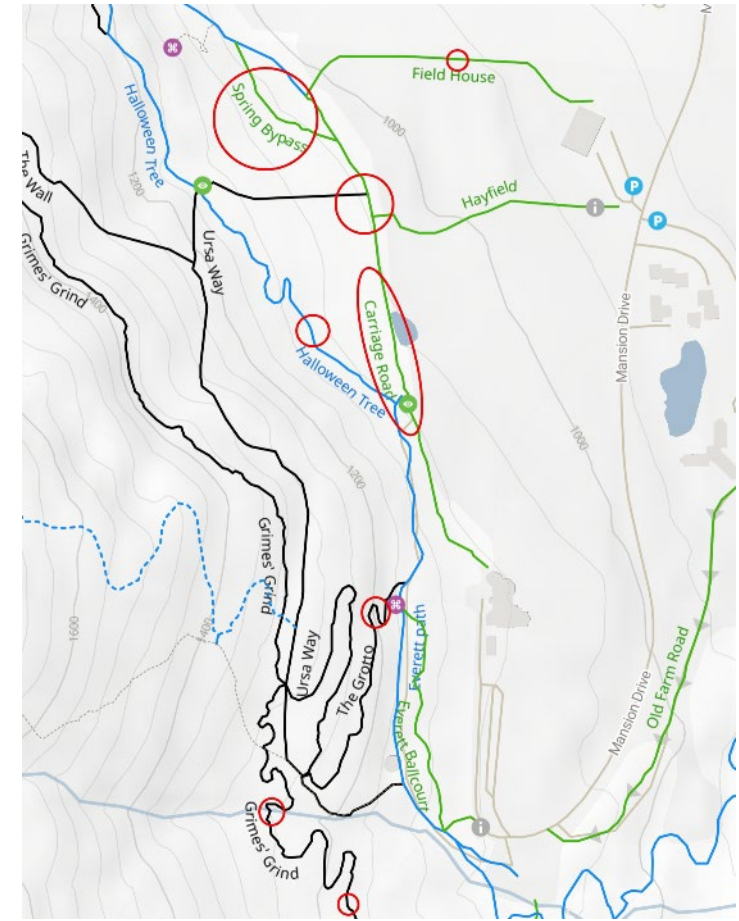
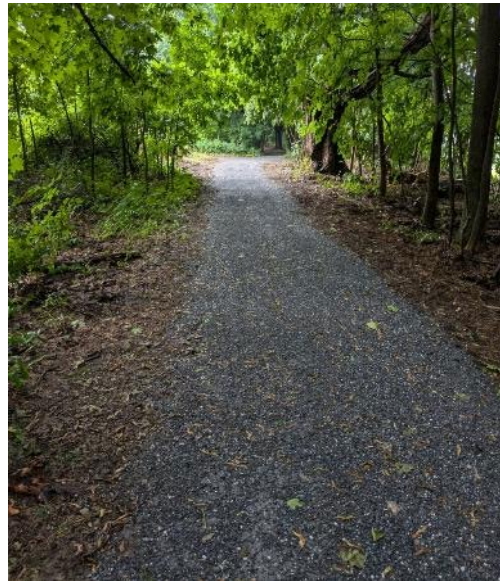




## Mt Anthony improvements (NFC) ('23 TG)



- Northern Forests \$12k & VMBA Grant \$3k
- Addressing drainage and erosion control
- Bridges
- Partner with SW Tech forestry program





## BRMBC – VMBA Grant at Underhill Central School



- An active BRMBC member, Deborah Towne, passed away in July 2021. Friends and family asked BRMBC to start a Deborah Towne Memorial Fund and to use the money for a worthwhile, bike-related project.
- Talks with UCS personnel led the club in the direction of a phased project with phase 1 being a user-friendly, multi-use, all-season, ADA-compliant gravel-surfaced recreation path around the perimeter of the play fields and phase 2 being future mountain bike trails in the wooded portion of the school property.



## Phase 1 is completed

**Underhill Central School and the community now have a wonderful multi-use path suitable for all manner of users.**



## BRMBC – VMBA Grant at Underhill Central School



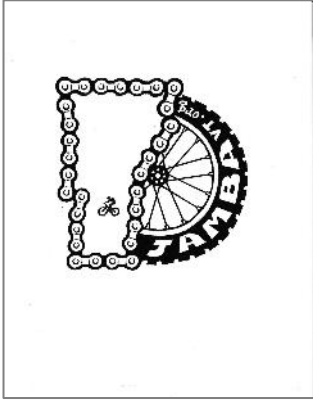
**Project Funded with a total of \$39,420 in grants and donations plus additional significant donated contributions from FW Whitcomb Construction Co & Kingsbury Construction Co valuing over \$30,000.**

- Vermont Mountain Bike Association - \$4,800
- Deborah Towne Memorial Fund - \$2,500
- Brewster River Mountain Bike Club - \$2,500
- Sunrise Physical Therapy - \$500
- Community Fundraising - \$1,870
- VEC Community Grant - \$1,500
- ARPA Funds - \$18,000
- Mt. Mansfield School District - \$5,000
- Outdoor Gear Exchange - \$2,000
- Champlain Investment Partners - \$500
- Heritage Automotive Group - \$250
- FW Whitcomb Construction Co – Gravel + Trucking
- Kingsbury Construction Co – Labor + Equip

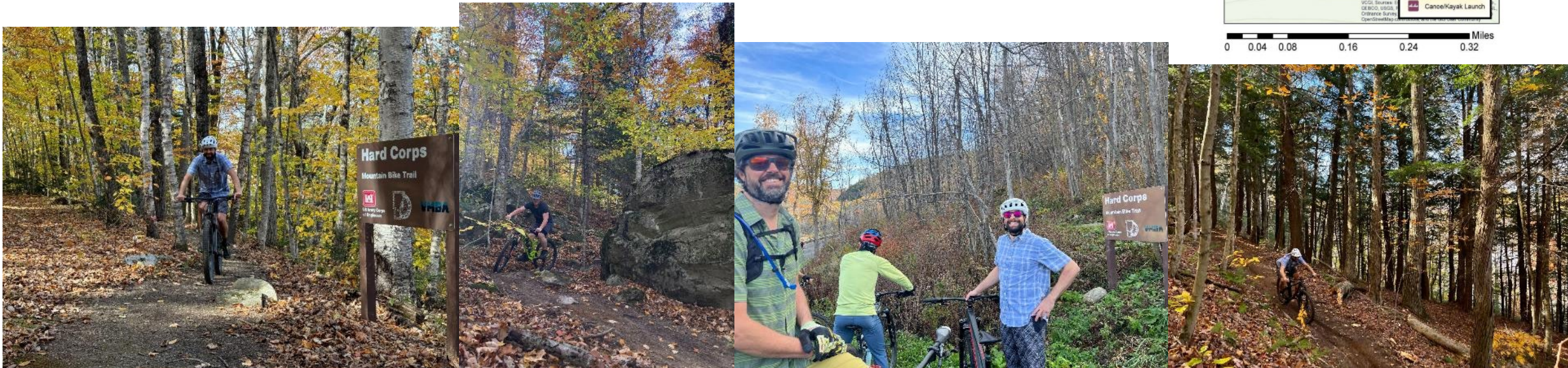
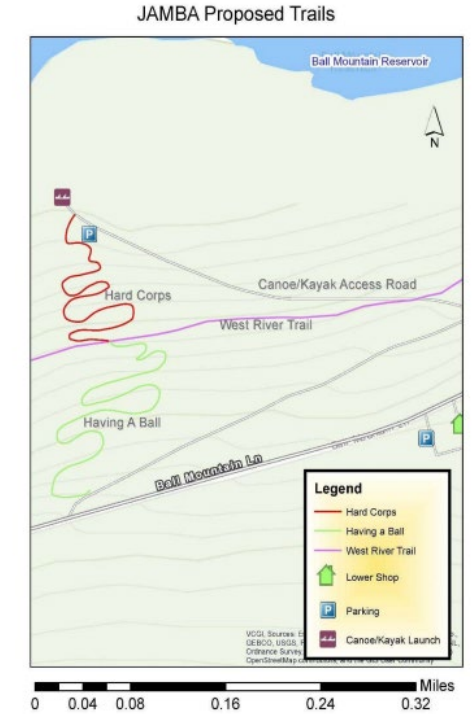




## JAMBA – Completion of “Hard Corps”

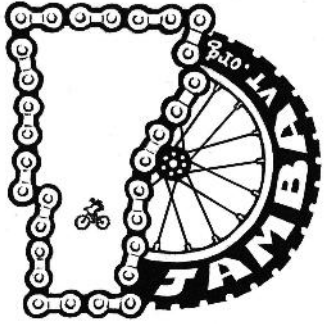


- Completed application of a 2023 VMBA Trails Grant
- Worked with Sustainable Trailworks on the final .5 mile of hand-built 1 way trail
- Worked with USACE (landowners) through a Partnership Agreement
- Home to the most scenic trailhead in Vermont :)
- Huge step towards the first MTB trail network in the West River Valley





## JAMBA – Jamaica Village School Skills Loop (Phase 1)



- Application of a 2024 VMBA Trails Grant
- Worked with Sinuosity on a Skills Loop around the Jamaica Village School
- Worked with WCSU (landowners)
- An adaptive-friendly, all ages and skill level accessible community centerpiece
- Right in the Village, accessible to downtown and Jamaica State Park







## Ludlow Area Sport Trails Back 40 Extension

**Location:** Village of Ludlow

**Funding:** VMBA Trail Grant  
Town of Ludlow ARPA

**Funds**  
**1.4 Miles Of New Trail Constructed**  
**Including:**

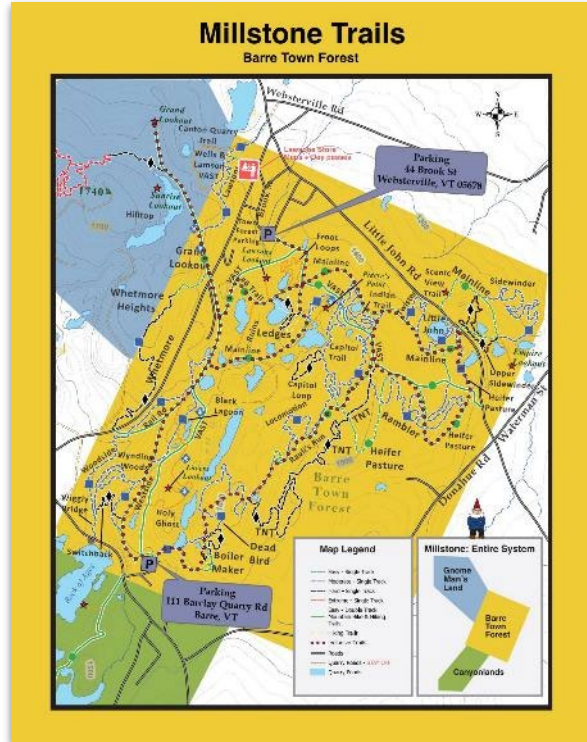
- \* 800 If kids beginner trails
  - \* Uphill trail constructed by volunteers
  - \* Phase 2 & 3 constructed by Sinuocity. Thank You!
- Located adjacent to Ludlow Elementary School  
Expeditionary School at Black River, Okemo Mountain School  
and the Ludlow Community Center.

**These trails in the heart of Ludlow are gaining enthusiasm  
which helps our organization grow and expand! Thank You VMBA**





## Millstone Trails Association – New Trail Signage

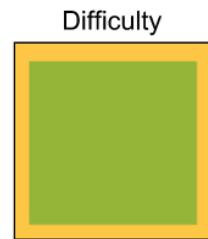


### \$2,305 to Improve and Expand Trail Signage

Vandalism and theft had lead to a loss of trail signage at Millstone which made navigating our trail network difficult which in turn created a poor user experience.

In 2024 we installed 131 new signs throughout the Town Forest. (Due to logging operations on neighboring private land, we had to postpone addressing our “Grand Canyon / Fellowship” trail system which we will complete this summer.

Designed by MTA Board Member and local artist, Beth Mueller, these signs align with our Trail Forks map format. In addition to identifying difficulty and length, each sign features Beth’s unique artwork which we are equally proud of.



OLD



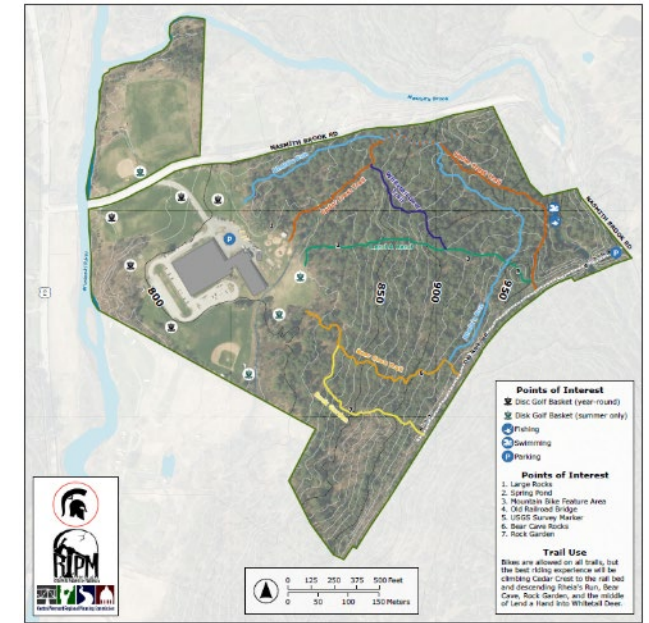
NEW





# RIPM: Mapping, Kiosks, and Trail Signs at Twinfield School

- Community rec planning **identified lack of information as a top barrier to outdoor access** in our community
- RIPM partnered with the local K-12 school to **add maps, informational kiosks, and trail signage** to increase public knowledge of and access to trail system
- Worked with students, staff, and CVRPC to **map all trails, install kiosks, and trail signs**
- With funding from NFC, we **held 3 community nights** with trail rides, hikes, lawn games, wood-fired pizza





## Stratton Town Forest - Blue Brook Boogie



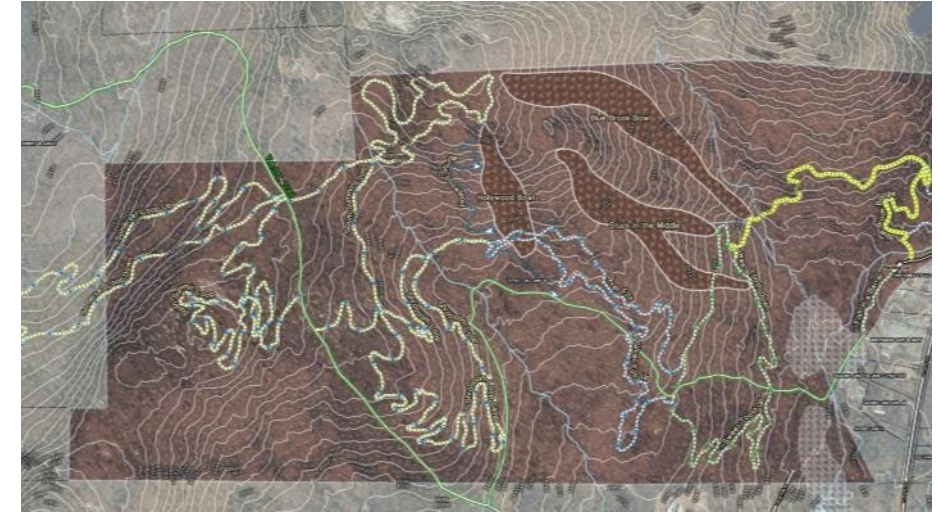
### Proposed :

Provide a adaptive/family friendly multi-use connection from the parking lot to Sweet Tooth.

- 4 week timeline
- .75 miles of trail
- 2 Bridges
- 1 50ft boardwalk

### Outcomes:

- One of the rainiest seasons on record. Causing significant delays with damage to existing trails.
- 6 Weeks: 3 weeks of machine work
- 1 mile of trail
- 3 bridges
- Rock Work in place of boardwalk
- Expanded parking lot.
- Less user traffic by adjacent landowners





## Trails at Crosstown- Crosstown Trail Water Mitigation



### Proposed :

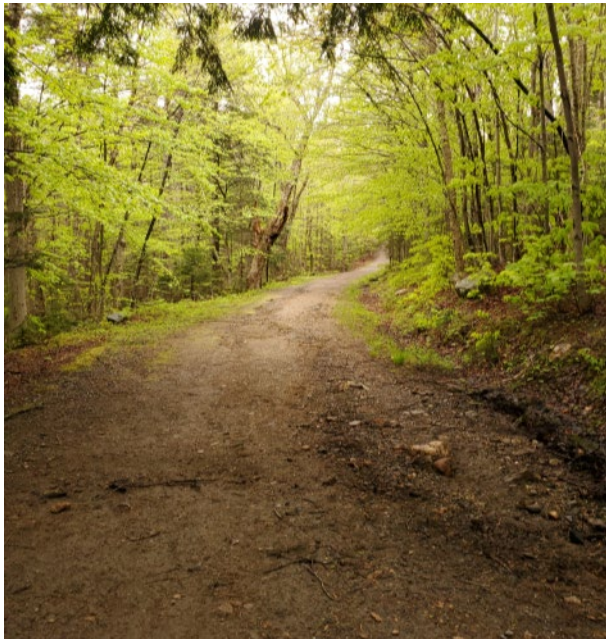
Improve drainage on crosstown trail to mitigate sediment transfer and erosion.

- 2 week timeline
- 15 work sites
- 2 Bridges
- Re-grade several sections
- Re-surface graded sections

### Outcomes:

Mount Snow asked us to focus on drainage and rock armoring of ditches

- 2 weeks timeline
- 1 mile of trail re-graded
- 3 miles of ditches improved
- 22 intersection signs & posts installed
- 4 bench's installed
- 50 yards of ditch stone
- Re-surfacing of remaining sections to be done this summer





# BOARD ELECTIONS

## Two Directors Running for Reelection



Quinn Keating

- Prior Chair
- Ambassador Lead



Tara Mirakian

- Secretary
- Marketing Lead

- Online voting open 3/13 - 3/26
- 140 Votes from VMBA Members

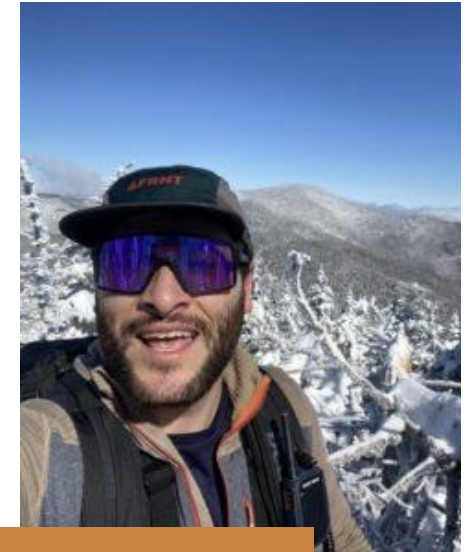
## Three Candidates for One Open Seat



Steve Letendre



Sasha Dietschi-



Zach Berger



## BOARD ELECTION RESULTS



REELECTED:  
Quinn Keating,  
*West Bolton*  
(99%)



REELECTED:  
Tara Mirakian,  
*Morrisville*  
(99%)



ELECTED:  
Steve Letendre,  
*Middleton Springs*  
(62%)



## LOOKING AHEAD

### » TRAILS

- New & better trails from 15+ funded grants
- Distribution of BMP Handbook & Tools
- Adaptive Assessments (12) & Upgrades
- 100+ miles of Velomont design, construction
- Trail database development (internship)
- Growing the Trail Grant program

### » COMMUNITY

- Membership campaign support & growth
- 3rd Annual Elevate MTB Festival
- Trail Accessibility Hub
- What a Rider Looks Like Campaign
- Member Party 2.0 - Season S'ENDER
- Visitors Guide to Mountain Biking in VT

### » ADVOCACY

- Recreation Access Recognition (H.147 / S.79)
- VOREC Outdoor Rec Economic Impact Study
- Vermont Trail System modernization
- International Trails Summit

### » ORGANIZATION

- Hire Marketing & Communications Manager
- On-board Adaptive Assessment Coordinator
- Long-term fundraising planning
- Strategic Plan review & update



## VMBA AMBASSADORS



Kate Emmons  
Stowe



Jodie Legacy  
Morristown



Jeb Wallace-Brodeur  
East Montpelier



Holly Cloutier  
Burlington/Ludlow



Gabe Gore  
Burlington



Kim Bean  
North Pomfret



Greg Durso  
Burlington



Tyler Lewis  
Winooski



Nick Coe  
Middlebury



Matt Lyon  
South Burlington



Kristy Brown  
Colchester



Andre Cerny  
South Burlington



## 2025 BIKE RAFFLE!

# COMING SOON....

\$5 per raffle ticket, purchase as many tickets as you want!

**Raffle Dates: April 14– June 30, 2025**





## 2025 EVENTS

VMBA DAYS Series, presented by Lawson's Finest Liquids

1 » Burke Mountain & Kingdom Trails (July 12<sup>th</sup> & 13<sup>th</sup>)

2 » Thunder Mountain & NEMBA/DRT ( August 2<sup>nd</sup> & 3<sup>rd</sup>)

3 » Bolton Valley ( August 16<sup>th</sup>)

4 » Stratton ( August 23<sup>rd</sup>)

5 » Killington ( August 30<sup>th</sup>)



ELEVATE presented by: VMBA, NEMBA, & KTA  
*Stowe Trails Partnership & Trapp Family Lodge*  
*June 6<sup>th</sup>-9<sup>th</sup>*

Community Builder Event



ners  
**UNLIKELY  
RIDERS**



**VMBA** SEASON S'ENDER  
*Saskadena Six, WAMBA trails*  
*September 21<sup>st</sup>*



## OUR SUPPORTERS

### » SUMMIT



### » SWITCHBACK



### » Skyline



### » ZIP TIE

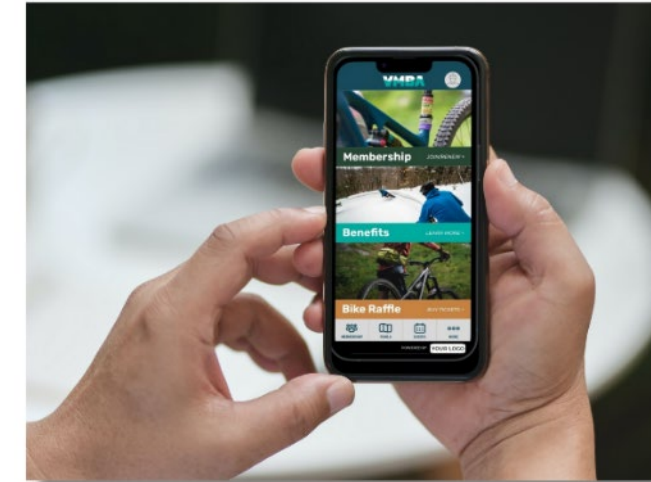
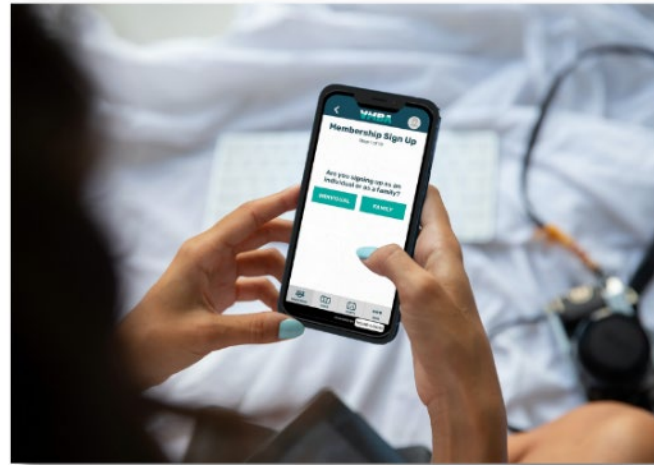




## DON'T FORGET YOUR MEMBERSHIP!

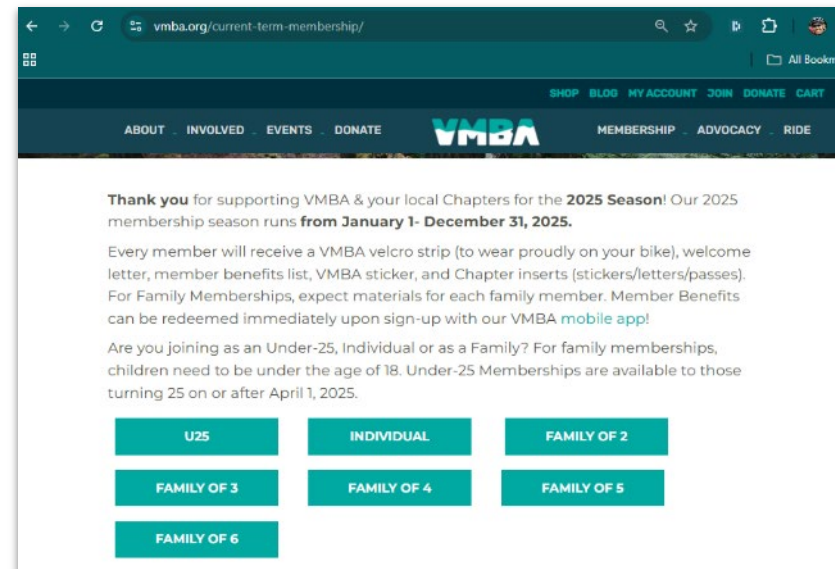
### GET IT ON THE APP or WEBSITE

- Immediate Membership activation
- App is also your tool for:
  - Access to Member Benefits
  - Redeeming DH tickets
  - Donating
  - Adding Chapters
  - Buy Raffle Tickets
- 10-14 days for packet delivery



### GET IT IN PERSON *(select events)*

- Get your packet on the spot
- Delayed access to Member Benefits (unless using the App)
- Free high-five included





## OUR TEAM

### » OFFICE STAFF

Nick Bennette  
EXECUTIVE DIRECTOR

Amy Potter  
OPERATIONS MANAGER

Joe Gaynor  
PROGRAMS & PARTNERSHIPS MANAGER

Marina Dosch  
MEMBERSHIP & EVENTS SUPPORT

### » VMBA BOARD

Cheryl Brodowski  
CHAIR

Tim Maher\*  
VICE CHAIR

Tara Mirakian  
SECRETARY

Curtis Fox  
TREASURER

Quinn Keating

Abby Crisostomo

Kelly Dolan

Anthony Staples

Annie Strout

Tony Bailey

Berne Broudy

\* Wrapping up term



## THANK YOU FOR JOINING!